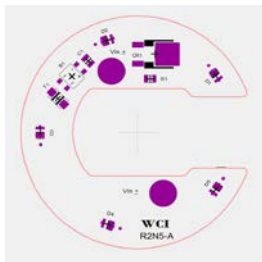


Horse Shoe LED Module

Module Code: R005N1570150



Module Description

- Suitable for indoor constant voltage projects
- Available in stock for 2200K-6500K CCT
- Maximum efficiency and better heat dissipation
- Rated for 150 mA constant current
- UL recognized module and ROHS components

LED		PCB		Applications
Brand	Nichia 757 series	PCB No.	R2N5-A	
Part Number	NFSL757GT-V1	Material	FR4	
Number of LED	5	Size	Dia = 57.15mm	
Color Temperature	2200K-6500K	Thickness	1.6 mm	<ul style="list-style-type: none"> • Pendants • Architectural • Retrofit • General Illumination

DRIVER		PERFORMANCE	
Input Voltage	18-24VDC	Lumen Output	5000K CCT at 150 mA, 360 Lumens
Input Current	150mA	Luminous Efficiency	135 Lm/W at 18VDC 100Lm/W at 24VDC
Type	Constant Voltage	Board Wattage	2.7 W at 18VDC 3.6 W at 24VDC

